



SINGLE ASSESSMENT AND PLAN

We would like to say a big thank you to everyone who helped shape the new Single Assessment and Plan, from choosing the name - **Family Support Plan**, to giving feedback on the wording and content, your ideas have helped us create something that works better for families in Sefton.

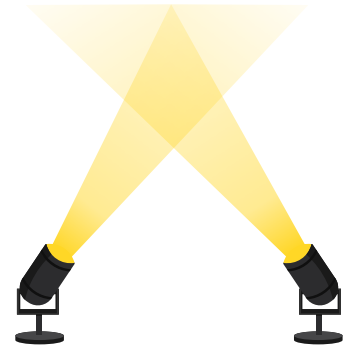
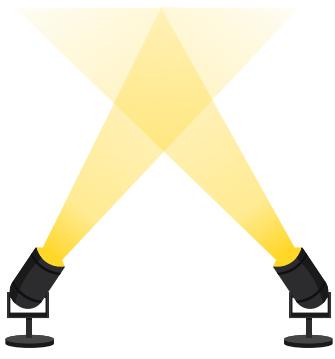
This new assessment and plan is designed to be one shared way of understanding what families need and making sure the right support is put in place at the right time.

How co-design started

Earlier this year, parents, carers, staff, and partner organisations worked together to design the first versions of the new Single Assessment and Plan. Children and young people also shared their views through their own group, helping to make sure it reflects their experiences too.

To make sure everyone had the chance to share their views, we also gathered wider feedback from staff and partners across the partnership to continue improving the assessment and plan.





Sefton Families First Partnership

This Weeks Spotlight

SINGLE ASSESSMENT AND PLAN

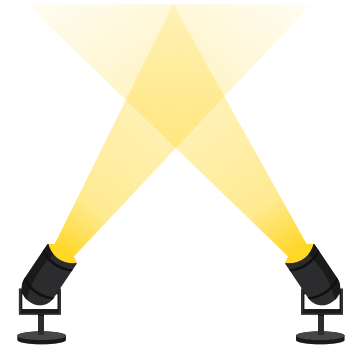
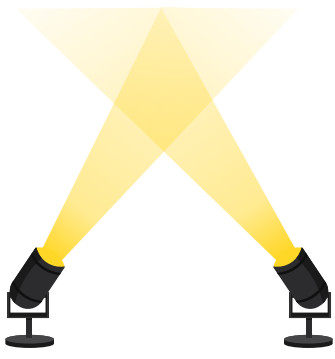
What families said works well in the new document:

- Support that looks at the needs of the whole family, not just one person
- A strong focus on listening to children and families and valuing their views
- Easy to follow and read, with a clear contents page
- Clearer, simpler language in many parts
- Covers important areas like neurodiversity, SEND, NEET, young carers, staying safe online, details of kinship carers, special guardianship and private fostering, plus much, much, more

What families said needs strengthening:

- Guidance on what to expect and what's expected of families
- More consistent, family-friendly language
- Creating the plan in multiple ways, for example paper and digital copies
- A wider offer within the welcome pack, to contain things such as useful telephone numbers of who to contact, and what time to contact each other etc





Sefton Families First Partnership

This Weeks Spotlight

SINGLE ASSESSMENT AND PLAN

Aswell as co-designing with our subgroup we have consulted our wider workforce and partners, below is an overview of the feedback from them:

What workers and partners said works well in the new document:

- Strong support for a whole-family approach
- Positive focus on the voice of the child and family
- Clear structure and helpful prompts for practice
- Improved accessibility of language (in parts)
- Inclusion of key areas such as neurodiversity, young carers, online safety and family network

What they said needs strengthening:

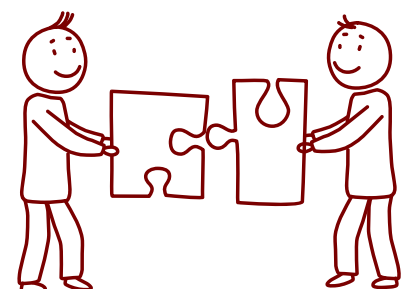
- Guidance tools and completed examples (including a quality assured “gold standard” example)
- More consistent, family-friendly language
- Greater clarity on roles and processes
- Improved system usability and integration
- Enhanced family experience (e.g. welcome pack, child-friendly tools)

Overall Message

There is strong support for this direction. This new Single Assessment Plan is seen as a positive step towards a more joined-up, family-centred approach.

Next Steps

- Refine the assessment
- Build the system
- Develop training and guidance
- Plan testing
- Continue to involve and update you



Your feedback is making a difference.