



Bootle Area Action Plan Issues and Options consultation newsletter November 2021 to January 2022



Scan to access the
consultation website

Information inside about the first stage
of consultation and **how you can get involved**



A plan for the future of Bootle, created by you

Sefton Council is inviting the local community to come together to create 'Our Future, Our Bootle'. This will be an Area Action Plan that, once adopted by the Council, will set out a shared vision for the town for the next 20 years and beyond.

It will identify the locations in the town where investment is needed. It will also help to secure the homes that people need and want, good quality open spaces and facilities, as well as job opportunities. Nobody knows Bootle better than the people that live and work in the town, so we need your help to create this important document.



The area included in the Area Action Plan

What is an Area Action Plan?

An Area Action Plan is a document that provides specific planning policy and guidance for an area where significant regeneration or investment is needed.

Why do we need an Area Action Plan?

Sefton already has a Local Plan, which was adopted in 2017. The Area Action Plan will sit alongside the Local Plan, as part of the development plan for the area and will guide future planning applications in the town. It will help provide greater certainty to residents, developers and local businesses about how the future of Bootle will develop and help promote investment and regeneration opportunities. It will also assist the Council to quickly identify projects for future funding bids.

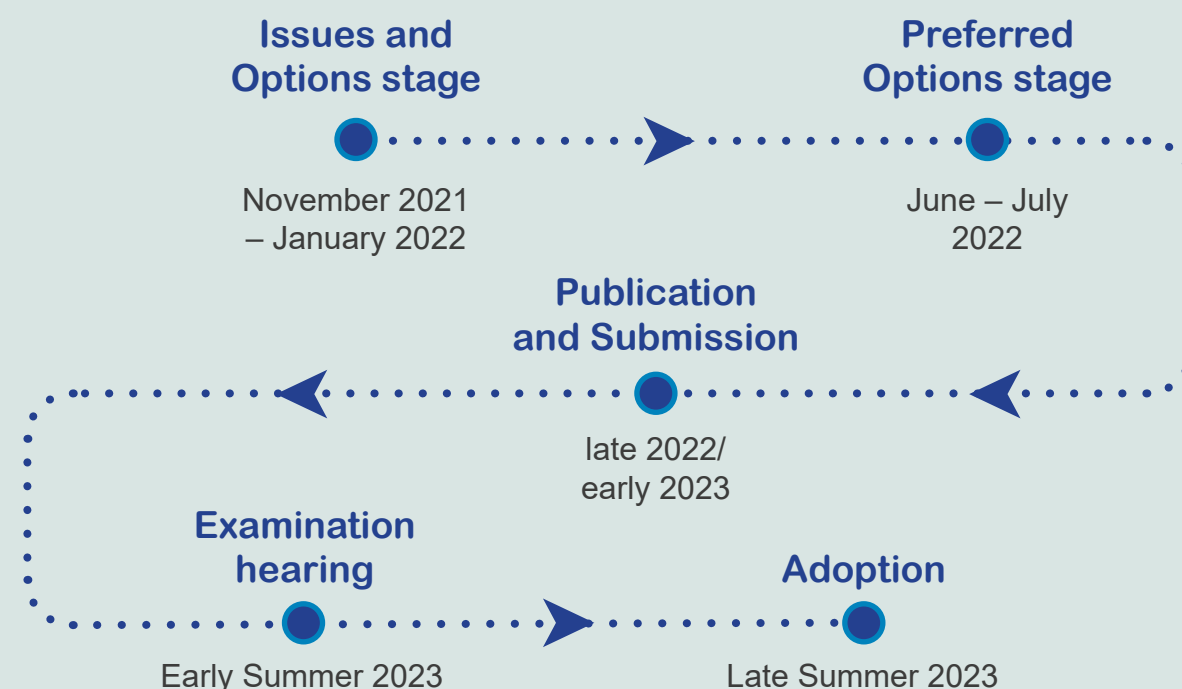
The stages of an Area Action Plan

'Our Future, Our Bootle' will be developed in stages. This will give you plenty of opportunities to get involved. We are currently at the Issues and Options stage, which is the first stage of the process.

The timeline below shows the key stages and the likely dates these stages will happen. These dates may be subject to change. We will keep you updated via a dedicated page of the Council's website www.sefton.gov.uk/bootleaap.



Timeline



We need your help to create a vision for Bootle

The Area Action Plan will give us an opportunity to create a shared vision for Bootle.

The Issues and Options document includes a number of phrases and words that could be used to inform the vision. A small number of these phrases are included below, however there are more in the document.

We want your feedback on what you think of these phrases. Do you think they are right? Can you think of more? Turn to the back page to find out how you can tell us what you think.



Better air quality





Sense of community



Wider choice of homes



More sports facilities





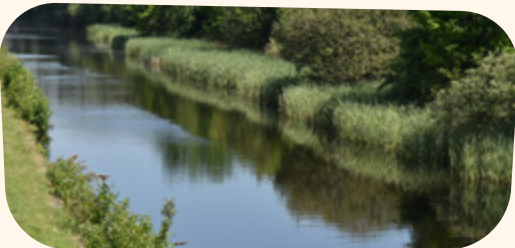
Improved green spaces



Safer spaces



Making space for nature



Help us understand the Issues and Options

Over the past few months we have been speaking with our colleagues and reviewing feedback received during past consultations in Bootle.

We have come up with a number of potential issues covering a wide range of topics. The topics are summarised in this newsletter along with the key issues identified. We would like to know what you think about the issues listed here and how these could be addressed. Further information on each issue and potential options are included in the Issues and Options document.



Economic Growth and Investment



Communities and Housing



Climate Change and the Environment



Infrastructure and services

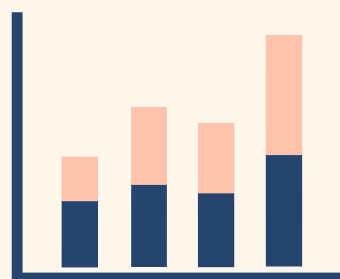


Placemaking



Health and Recreation

Please turn over to read more...



Economic Growth and Investment

The Issues and Options document highlights a number of issues relating to Economic Growth and Investment. These are listed below. Do you agree with these?

- Bootle needs to have a sufficient supply of good quality and well-located employment sites to provide opportunities for investment and jobs for local people.
- The high level of empty office space in Bootle's Office Quarter, if left, will make it more difficult to improve the centre.
- Changes to the amount of occupied office accommodation in Bootle or change of use of any of these buildings may result in a change in parking requirements and demand.
- How can the Bootle area be protected from the significant environmental impacts of the port and its associated activities?
- How can social value benefits be secured and opportunities maximised for Bootle residents from new development?

The Area Action Plan will be able to influence the type of companies Bootle can attract, the spaces these business will use, and importantly, how the people off Bootle can benefit from this.

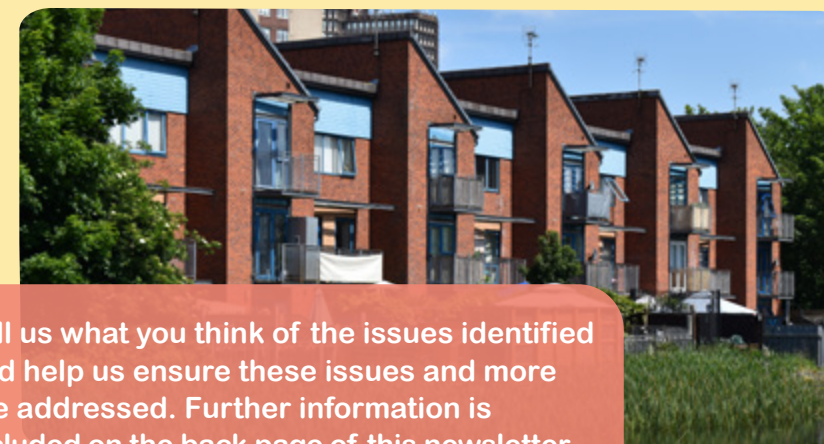


Communities and Housing



These are the issues that we have identified that need addressing relating to Housing and Communities. Do you agree with these?

- The number of vacant homes in the Bootle area is too high and can cause issues with anti-social behaviour which can have a negative impact on a local area.
- There is a need to provide a greater choice of house types in Bootle, including homes with rear gardens and off-street parking spaces. This applies to homes for sale and rented properties.
- There has been too many inappropriate and poor-quality conversions to flats and homes in multiple occupation in the Bootle area causing issues with residential amenity, noise, refuse, parking and the character of local areas.
- Bootle, like many other areas, has an ageing population and there are a higher proportion of residents with a limiting long-term illness. This has implications for the type and standards of future housing that is required.
- Bootle has a strong sense of community and pride, with a good network of resident and voluntary groups. This is essential for the future success of the area. These networks should be an integral part of future plans for Bootle.



The Area Action Plan can help to ensure that the right types of homes can be delivered in Bootle and can help to protect the great community spirit in the town.

Tell us what you think of the issues identified and help us ensure these issues and more are addressed. Further information is included on the back page of this newsletter.



Climate Change and the Environment

The issues we have identified relating to Climate Change and the Environment are listed below. What do you think of these?

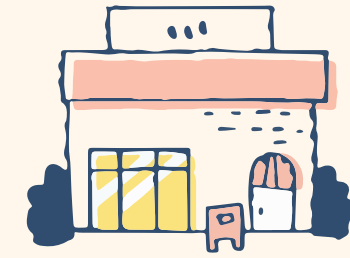
- Many of the potential development sites in the Bootle area have high levels of contamination and this could affect the viability of new development and the wider benefits that would be delivered.
- Bootle has a good network of public transport links and benefits from easy access by car to the wider area. However, walking and cycling links could be expanded to allow safe and pleasant routes between key services and facilities in and around Bootle.
- Poor air quality affects some areas of Bootle and leads to poor health and a poor living environment.



Tell us what you think of the issues identified and help us ensure these issues and more are addressed. Further information is included on the back page of this newsletter.

- Bootle has to adapt to the challenges of climate change, and opportunities to reduce and mitigate the effects of climate change should be addressed.
- As a built-up area Bootle has fewer nature and ecological areas than those in or near the countryside. Nonetheless, there are opportunities to improve ecological networks in the town and for its residents benefit from doing so.

Infrastructure and Services



We would like to know what you think of the issues we have identified relating to Infrastructure and Services. Are these right?

- Bootle Town Centre is suffering from high vacancy levels as the way we shop and use services changes.
- Bootle has many shopping parades, some of which contain too many poor quality and outdated units unsuitable to meet modern convenience shopping and service needs.
- Existing and future communities must be supported by necessary and appropriate infrastructure and services.





Placemaking

The issues we have identified relating to Placemaking and Health and Recreation are listed below. What do you think of these? Have we missed anything?

- The regeneration of Bootle should have good design at its heart and should reflect the aspirations of its communities and respect the historic and cultural context.
- The patchwork of industrial areas that are integrated within the residential areas of Bootle can often cause problems with noise, dust, traffic and odour. They can detract from the local environment, result in poor living conditions, deter investment and depress the value of homes.
- The Leeds and Liverpool canal is a major asset in Bootle and has the potential to help regenerate the town.
- Bootle has a good network of parks and open spaces, however more investment would be welcomed to help maintain them. A wider range of facilities and activities in Bootle's parks would make them more attractive to a wider range of residents.



Tell us what you think of the issues identified and help us ensure these issues and more are addressed. Further information is included on the back page of this newsletter.

- Bootle has many heritage assets, some of which are vacant and currently have no long term viable alternative use. However, they are important to retain and can be a driver for regeneration.
- Fly-tipping and litter issues are a concern for many residents and may have a detrimental impact on the attractiveness and perception of Bootle to those who live in and visit town.
- In order to ensure the future success of Bootle and change perceptions of the town, a more comprehensive and rounded approach to the issues facing the town is necessary.

The Area Action Plan could help to address these issues and provide the right environment to protect the communities in Bootle for years to come.

Health and Recreation



- Bootle residents suffer from a higher health inequality than other parts of the borough, including higher rates of obesity.

The Area Action Plan will explore how future development in Bootle can protect and enhance existing assets such as parks, open spaces and historic buildings.



It's over to you...

Come and meet us at:

Our pop-up shop at The Strand (Medway) on:

Saturday 20th November, between 10 – 2

Wednesday 24th November, between 10 – 2

Friday 3rd December, between 10 – 2

Brunswick Community Centre, 104 Marsh Lane on Wednesday 24th November between 4 – 6.30pm

Community By Nature, 40-42 Hertford Rd on Friday 3rd December between 4 – 7pm

One of our 'online workshops' on:

Tuesday 23rd November between 6pm and 7pm

Wednesday 1st December between 1pm and 2pm

Read the full Issues and Options document.

At www.sefton.gov.uk/bootleAAP or in person at:

Bootle Library, Stanley Road; Magdalen House, Trinity Road; Bootle Town Hall, Oriel Road.



No need to make an appointment, just pop by and see us

Please contact us to register your place at an online workshop

How to give us your comments



Complete a feedback form online at www.sefton.gov.uk/bootleAAP or at the locations above.



By post: **Planning Department, Ground Floor Magdalen House, Trinity Road, Bootle L20 3NJ**



Email us at: bootleaap@sefton.gov.uk



Call us on Freephone **0808 168 8296**, leave a message and a member of the team will call you back.



You can also share your thoughts on **social media**. If you see a part of Bootle that you think needs to be protected or improved, share this on Twitter or Instagram using the hashtag **#OurBootle** or send them in via email.

The Issues and Options consultation will run until **Friday 7th January 2022**.

If you need this information in another format please contact us using the details below.

What happens next?

We will review and report on all feedback and use it to develop the 'Preferred Options'. This will be the next stage of consultation in **June** and **July 2022**.

You can contact the team at all times via email on bootleaap@sefton.gov.uk and by calling us via Freephone on **0808 168 8296**.