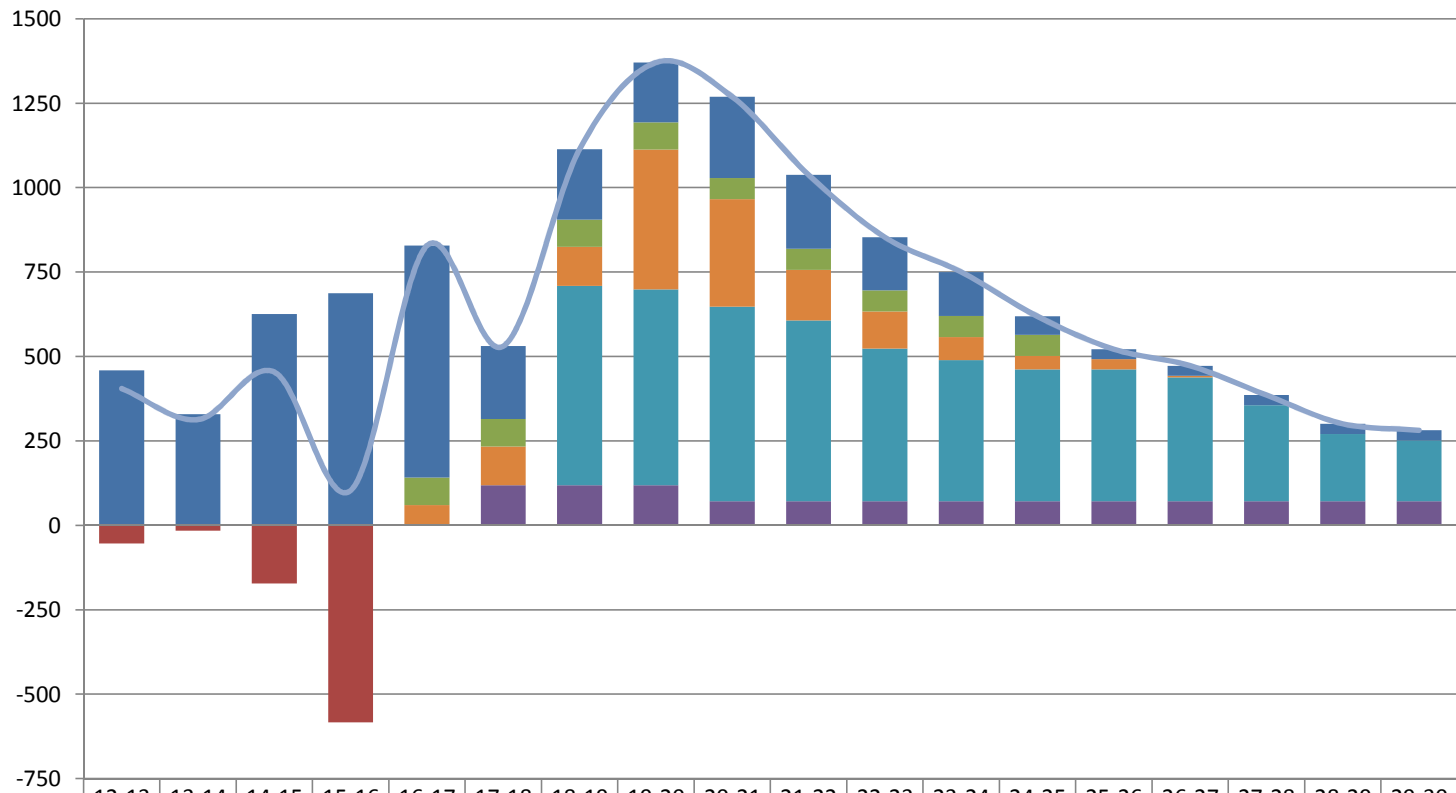


Local Plan Housing Trajectory 2012/13 to 2029/30



	12-13	13-14	14-15	15-16	16-17	17-18	18-19	19-20	20-21	21-22	22-23	23-24	24-25	25-26	26-27	27-28	28-29	29-30
SHLAA Sites with PP	459	329	626	687	687	216	208	177	241	219	157	130	55	30	30	30	30	30
SHLAA Sites without PP	0	0	0	0	81	81	81	81	62	62	62	62	62	0	0	0	0	0
Urban Housing Allocations	0	0	0	0	60	115	115	414	318	150	110	68	40	30	5	0	0	0
Green Belt Housing Allocations	0	0	0	0	0	0	591	580	576	535	452	418	390	390	366	284	199	180
Windfalls	0	0	0	0	0	119	119	119	72	72	72	72	72	72	72	72	72	72
Demolitions	-54	-16	-172	-584	0	0	0	0	0	0	0	0	0	0	0	0	0	0
NET ADDITIONAL DWELLINGS	405	313	454	103	828	531	1114	1371	1269	1038	853	750	619	522	473	386	301	282

Local Plan Allocations - Detail of Indicative Capacity and Phasing

Site Ref.	Location	Area [ha.]	Indicative Capacity	2015/	2016/	2017/	2018/	2019/	2020/	2021/	2022/	2023/	2024/	2025/	2026/	2027/	2028/	2029/	Post-2030	
				16	17	18	19	20	21	22	23	24	25	26	27	28	29	30		
MN2.1	Bartons Close, Southport	1	36		16	20														
MN2.2	Land at Bankfield Lane, Southport (220)	9	300				30	30	30	30	30	30	30	30	30	30				
MN2.3	Former Phillips Factory, Balmoral Drive, Southport	6	158				30	30	30	30	8									
MN2.4	Land at Moss Lane, Churchtown	19.1	450				30	30	30	30	30	30	30	30	30	30	30	30	90	
MN2.5	Land at Crowland Street, Southport	25.8	678				30	30	30	30	30	30	30	30	30	30	30	30	318	
MN2.6	Land adjacent to Dobbies Garden Centre, Benthams Way, Southport	8.7	215					30	30	30	30	30	30	30	5					
MN2.7	Land at Lynton Road, Southport	1.5	25				25													
MN2.8	Former Ainsdale Hope School, Ainsdale	9.2	243					30	30	30	30	30	30	30	30	3				
MN2.9	Former St John Stone School, Meadow Lane, Ainsdale	1.3	40					20	20											
MN2.10	Land at Sandbrook Road, Ainsdale	2.58	83		24			30	29											
MN2.11	Land south of Moor Lane, Ainsdale	2.6	69				30	30	9											
MN2.12	Land north of Brackenway, Formby	13.7	286				30	30	30	30	30	30	30	30	30	16				
MN2.13	Land at West Lane, Formby	1.9	40				20	20												
MN2.14	Fmr Holy Trinity School, Lonsdale Road, Formby	0.9	50			40		10												
MN2.15	Formby PDC, Park Road, Formby	1.6	15					15												
MN2.16	Land at Liverpool Road, Formby	14.2	319				30	30	30	30	30	30	30	30	30	30	19			
MN2.17	Land at Altcar Lane, Formby	0.7	29				29													
MN2.18	Power House phase 2, Hoggs Hill Lane, Formby	0.6	20				20													
MN2.19	Land at Andrew's Close, Formby	3.3	87				30	30	27											
MN2.20	Land at Elmcroft Lane, Hightown	6.5	120				30	30	30	30										
MN2.21	Land at Sandy Lane, Hightown	0.7	10				10													
MN2.22	Land at Hall Road West, Crosby	1.1	14				14													
MN2.23	Land at Southport Old Road, Thornton	3.9	85					30	30	25										
MN2.24	Land at Holgate, Thornton	8.4	221					30	30	30	30	30	30	30	11					
MN2.25	Land at Lydiate Lane, Thornton	10.3	265				30	30	30	30	30	30	30	30	25					
MN2.26	Land south of Runnell's Lane, Thornton	5.3	137				30	30	30	30	17									
MN2.27	Land at Turnbridge Road, Maghull	1.6	40				20	20												
MN2.28	Land north of Kenyons Lane, Lydiate	9.7	295				30	30	30	30	30	30	30	30	30	25				
MN2.29	Former Prison Site, Park Lane, Maghull	13.6	370	Planning permission at 01-04-2015																
MN2.30	Land east of Waddicar Lane, Melling	6	178				30	30	30	30	30	28								
MN2.31	Wadacre Farm, Chapel Lane, Melling	5.5	135				30	30	30	30	15									
MN2.32	Land south of Spencers Lane, Melling	0.6	18				18													
MN2.33	Land at Wango Lane, Aintree	1.8	25				25													
MN2.34	Aintree Curve Site, Ridgewood Way, Netherton	3.1	109		20	35	35	19												
MN2.35	Former Z Block Sites, Buckley Hill Lane, Netherton	3.5	100				30	30	30	10										
MN2.36	Former St Raymond's School playing field, Harrops Croft, Netherton	1.9	65					30	30	5										
MN2.37	Land at Pendle Drive, Netherton	1.4	52					30	22											
MN2.38	Land at the former Bootle High School, Browns Lane, Netherton	1.7	63					30	30	3										
MN2.39	Former Daleacre School, Daleacre Drive, Netherton	1	37					30	7											
MN2.40	Former Rawson Road Primary School, Rawson Road, Bootle	1	20			20														
MN2.41	Former St Wilfrid's School, Orrell Road, Bootle	6.6	160					30	30	30	30	10								
MN2.42	Klondyke Phases 2 and 3, Bootle	4.2	142	Planning permission at 01-04-2015																
MN2.43	Peoples site, Linacre Lane, Bootle	2.9	110					30	30	20										
MN2.44	Former St Joan of Arc School, Rimrose Road, Bootle	1.3	51	Planning permission at 01-04-2015																
MN2.45	Former St Mary's Primary School playing fields, Waverley Street, Bootle	1.6	72					30	30	12										
MN2.46	Land East of Maghull	86	1400				40	80	120	120	120	120	120	120	120	120	120	120	80	
TOTALS:		314.88	7437						1875	3057					1454					488