



Enjoy the outdoors and get closer to nature at Formby

Walk Formby's dynamic coast

Squirrel Walk

Circular walk of 1/2 mile – allow 1/2 hour

Cornerstone Walk

A walk of 3/4 mile via woodland picnic site and environmental playspace

Asparagus Trail

Circular walk of 1 1/2 miles

Sefton Coastal Path

Up to 21 miles – plan to suit your ability

Asparagus Cycle Trail

Cycle on the Coastal Path South of Victoria Road to Lifeboat Road – distance 1 1/2 miles

Boardwalk Path

This is the most accessible route to Formby beach from the Lifeboat Road car park.

NOTE: All paths may have some sandy sections. Short sections of paths with 1:12 gradients



Heritage Trails
The 'Lost Resort' and the 'Devils Hole' Trails are available to download from www.nationaltrust.org.uk/formby

You and your dog

We love four legged friends at Formby! Help us keep our site tidy by picking up after your pet – bagged waste can be put in any of our litter bins. Respect our wildlife, do not let your dog chase birds or animals and always keep them on a lead around squirrel walk. Please keep your dog under close control in all areas.



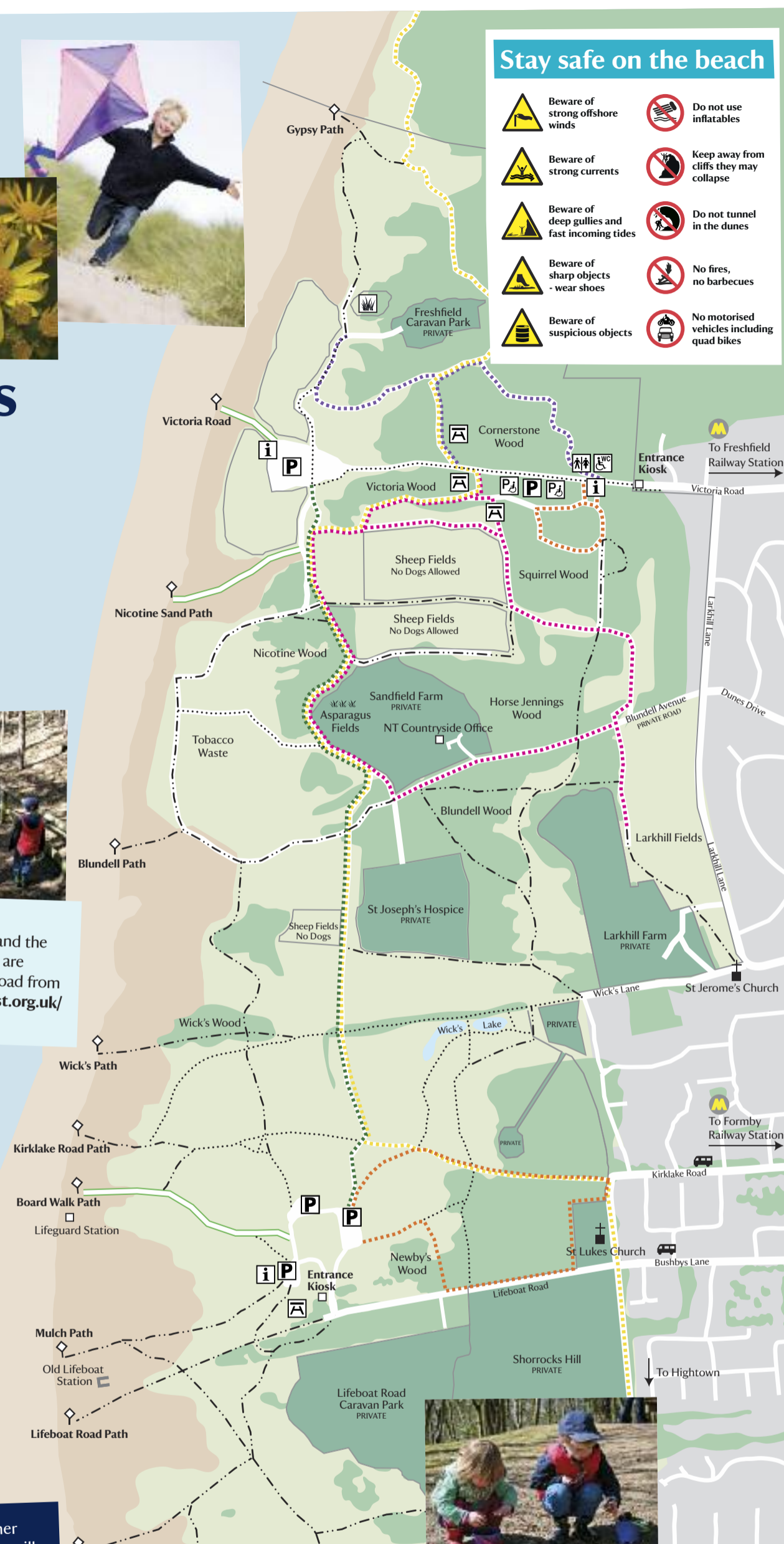
- Key**
- Squirrel Walk
 - Cornerstone Walk
 - Asparagus Trail
 - Asparagus Cycle Trail
 - Sefton Coastal Path
 - Beach Entrance/Exit Points
 - P** Car Parking
 - P** Disabled Car Parking
 - T** Toilets
 - T** Disabled Toilets
 - B** Baby Changing Facilities
 - A** Picnic Table
 - - - - - Path
 - - - - - Sandy Dune Path
 - i** Information Board
 - ◇** Beach Marker
 - W** Dune Protection Area
 - Woodland
 - Dune Grassland
 - Sand Dune
 - Beach

Scale (metres approx.) 500

Based upon Ordnance Survey mapping with the permission of the Controller of HMSO © Crown Copyright. All rights reserved. National Trust AL100023974 (2012). Designed and produced by ABC Design & Communications, www.abcdesignuk.com

Stay safe on the beach

- Beware of strong offshore winds
- Beware of strong currents
- Beware of deep gullies and fast incoming tides
- Beware of sharp objects - wear shoes
- Beware of suspicious objects
- Do not use inflatables
- Keep away from cliffs they may collapse
- Do not tunnel in the dunes
- No fires, no barbecues
- No motorised vehicles including quad bikes



During the summer months lifeguards will attend the marked bathing waters at Lifeboat Road close to the Lifeguard Station.

Your rubbish

- Dump it in the Bin
- Litter is dangerous
- Litter is costly
- Bag it, bin it, or take it home



Get active in the great outdoors

- Fly a kite
- Run around in the rain
- Hunt for treasure on the beach
- Track wild animals
- Hunt for bugs

For further information on getting you and your family out and about visit: www.50things.org.uk

